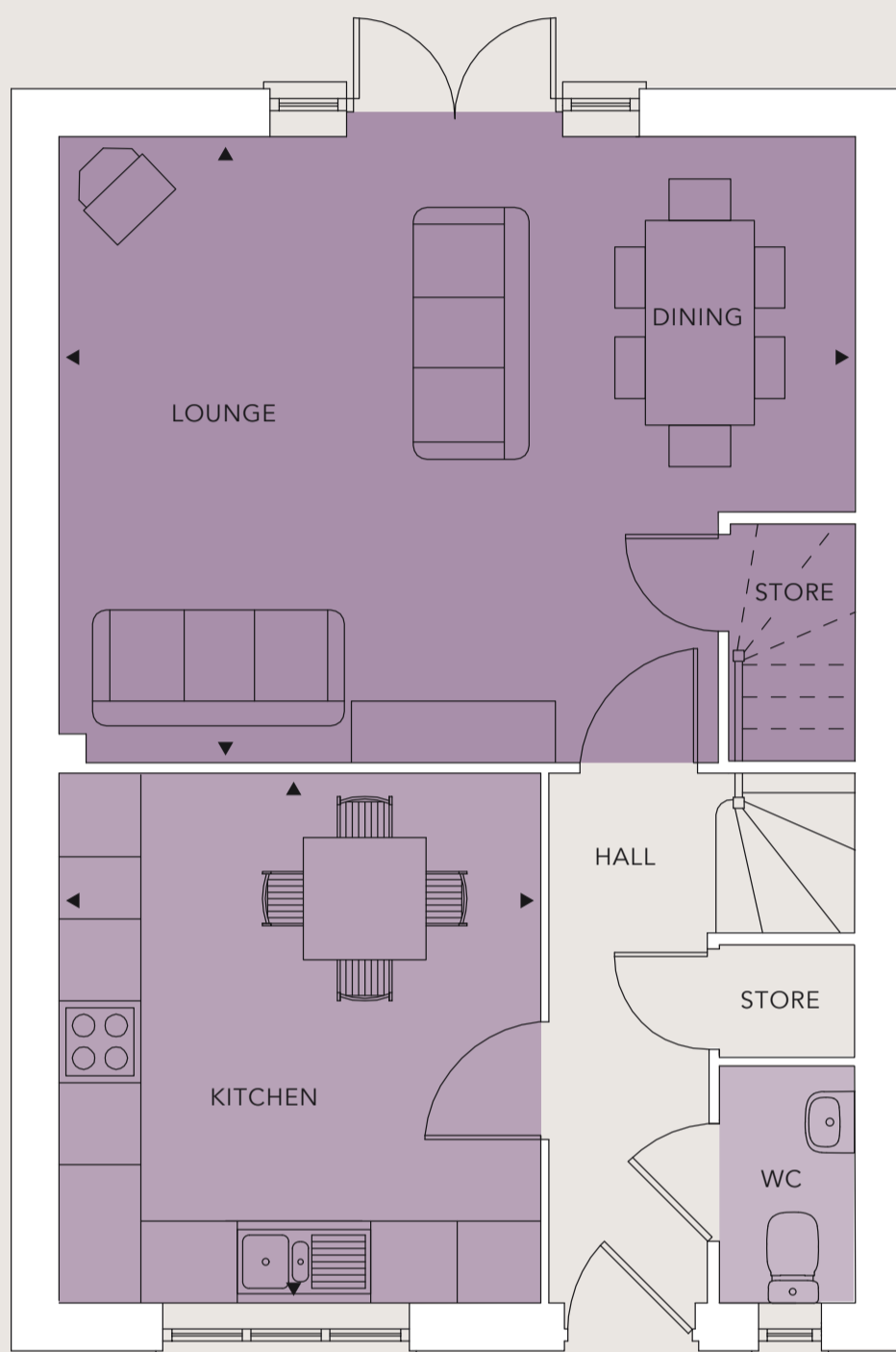


# Bridgewater

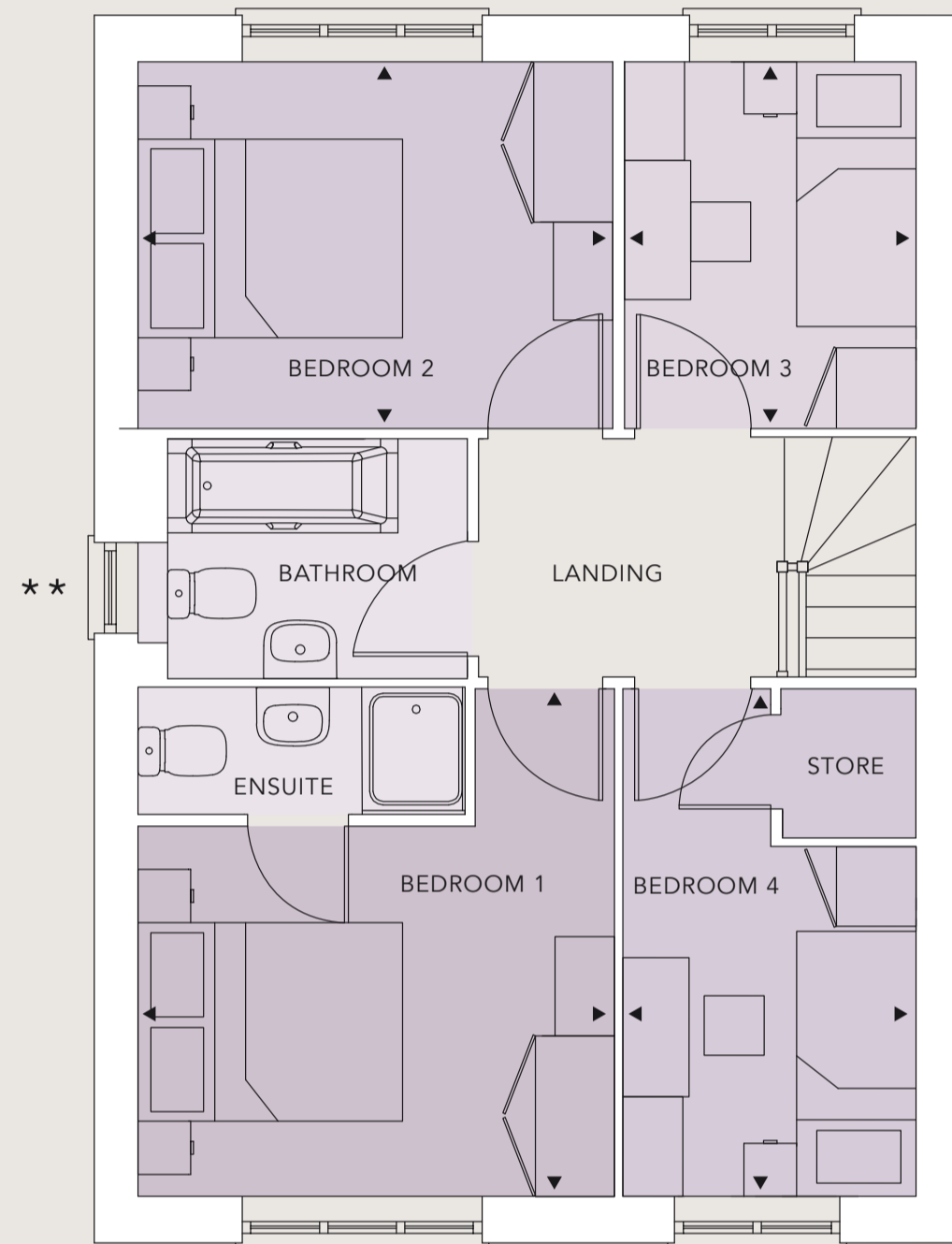
## 4 BEDROOM HOUSE

PLOTS 20\*, 39\*, 50, 51, 52\*, 64, 88\*, 89\*, 90\*, 91\*

HANDED PLOTS 50, 64, 89\*



GROUND FLOOR



FIRST FLOOR

### House details

Kitchen	3.88m x 3.52m	12'9" x 11'7"
Lounge/Dining	5.85m x 4.59m	19'2" x 15'1"
Bedroom 1	3.82m x 3.56m	12'7" x 11'8"
Bedroom 2	3.56m x 2.75m	11'8" x 9'0"
Bedroom 3	2.75m x 2.20m	9'0" x 7'3"
Bedroom 4	3.82m x 2.20m	12'7" x 7'3"

<b>Total</b>	<b>101.6 sq m</b>	<b>1,093.7 sq ft</b>
--------------	-------------------	----------------------



(\*Plots detached. All other plots semi-detached.)

(\*\*Window cannot be achieved on all plots. Please refer to site plan for further guidance.)

Development layouts provide approximate measurements only. Dimensions are for guidance only and are not intended to be used to calculate carpet sizes, appliance space, or items of furniture. These plans are not to scale.